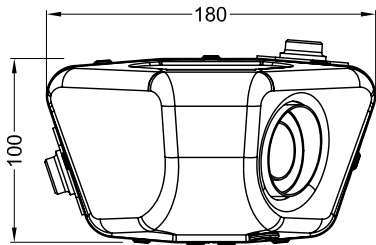
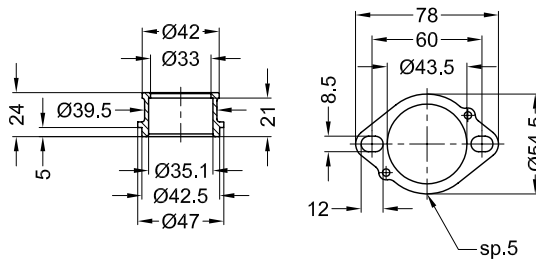


VISTA DA "A"

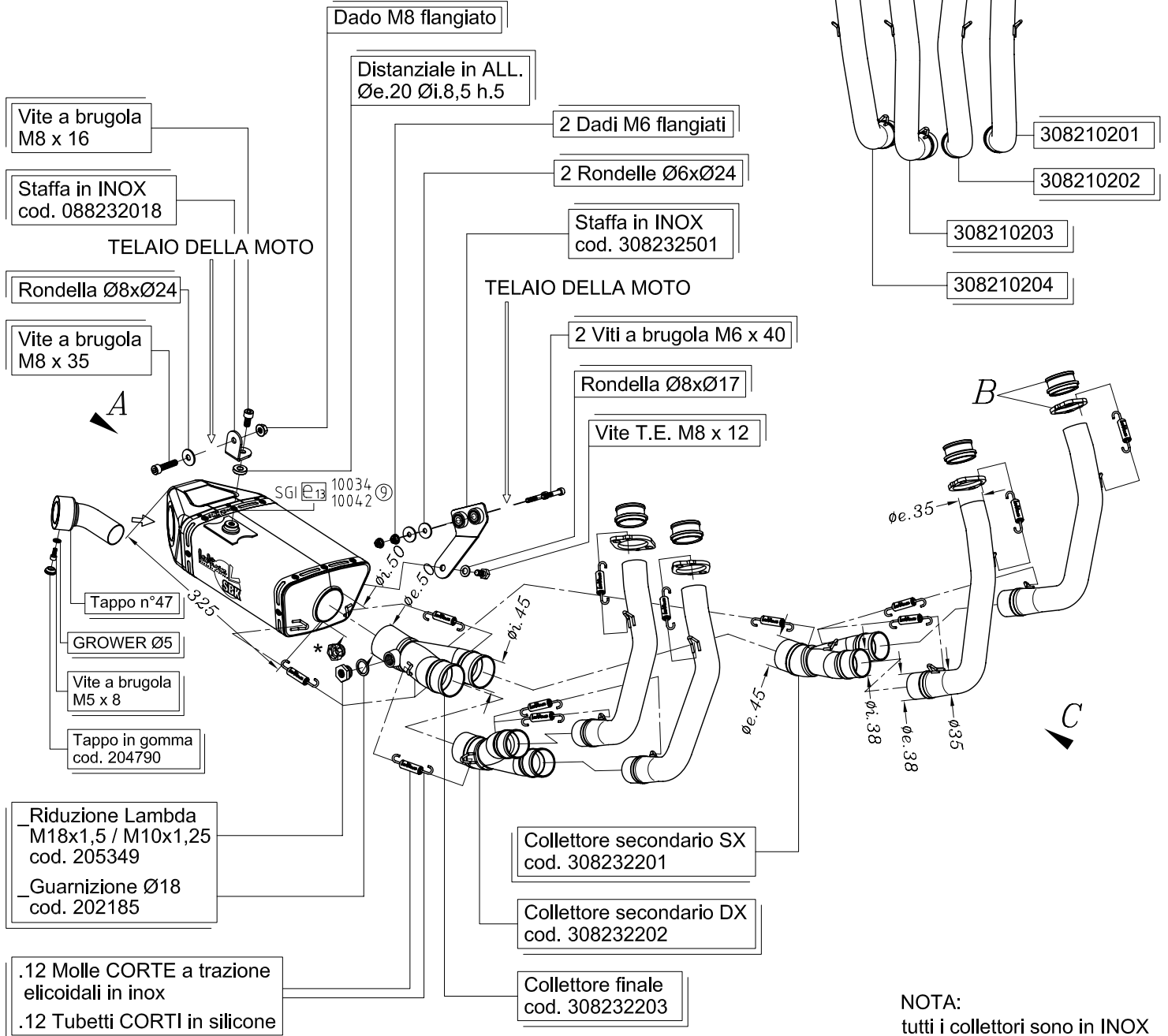
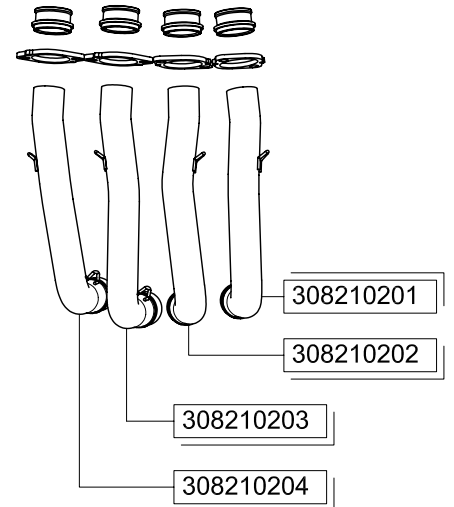


VISTA "B"

Boccole "205752" Flange "46D"



VISTA DA "C"



NOTA:  
tutti i collettori sono in INOX

\* Componente fornito in confezione e da utilizzare solo sulle motociclette non dotate di sonda Lambda  
.Tappo M18x1,5 h.9 (cod.201029)

YAMAHA XJ6 i.e. ('09/'13)

YAMAHA XJ6 DIVERSION i.e. ('09/'13)

YAMAHA XJ6 DIVERSION F i.e. ('10/'13)

Art.8232 Impianto completo SBK UNDERBODY - Passaggio STANDARD OMOLOGATO "EVOLUTION II"