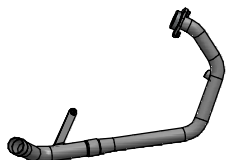


OPTIONAL PARTS

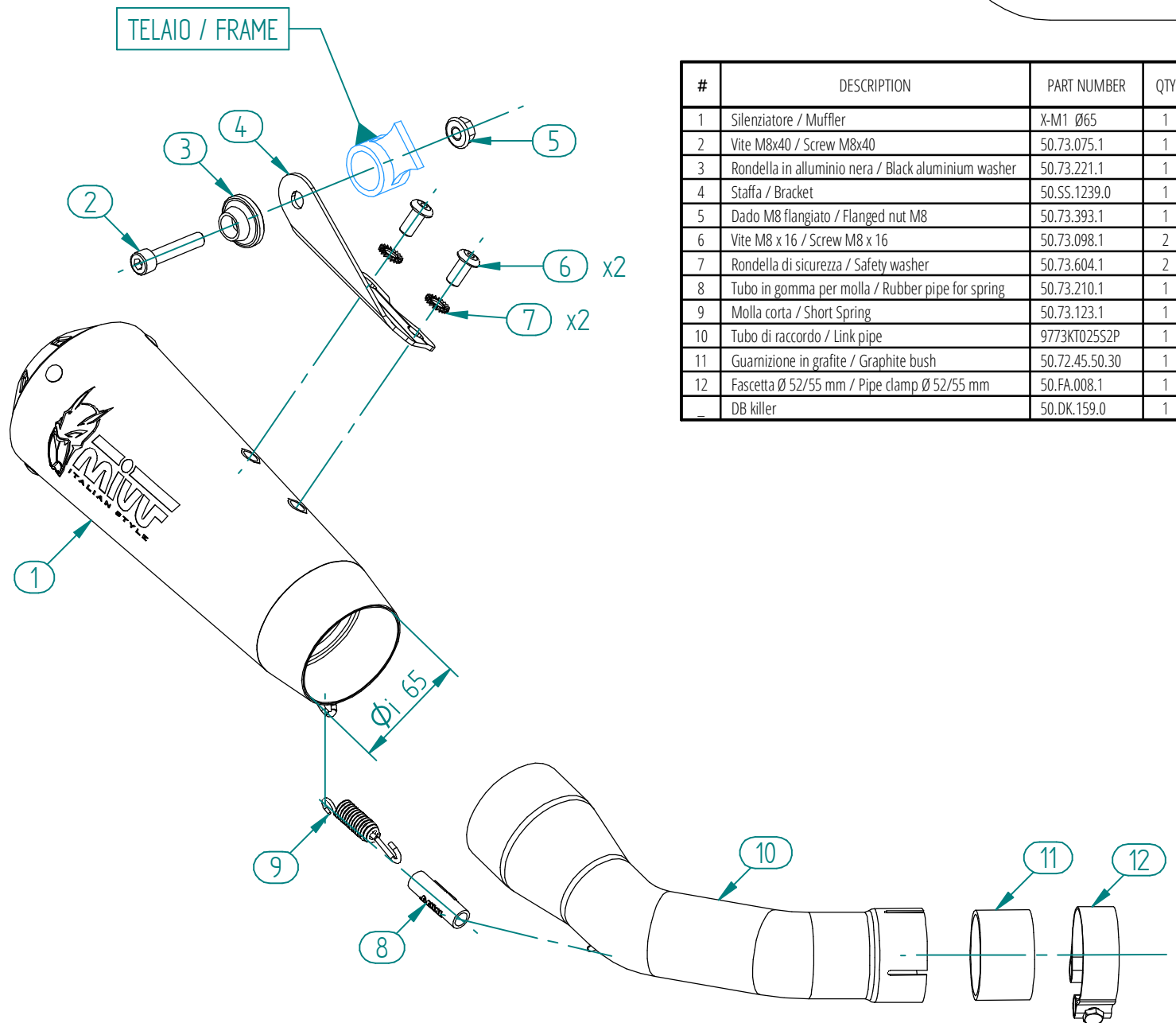
Tubo no kat - No kat pipe

Monta sia con silenziatori MIVV che con lo scarico originale
It fits both MIVV and genuine silencer

KT.025.C1
Duke 125



KT.025.C2
Duke 390



#	DESCRIPTION	PART NUMBER	QTY
1	Silenziatore / Muffler	X-M1 Ø65	1
2	Vite M8x40 / Screw M8x40	50.73.075.1	1
3	Rondella in alluminio nera / Black aluminium washer	50.73.221.1	1
4	Staffa / Bracket	50.SS.1239.0	1
5	Dado M8 flangiato / Flanged nut M8	50.73.393.1	1
6	Vite M8 x 16 / Screw M8 x 16	50.73.098.1	2
7	Rondella di sicurezza / Safety washer	50.73.604.1	2
8	Tubo in gomma per molla / Rubber pipe for spring	50.73.210.1	1
9	Molla corta / Short Spring	50.73.123.1	1
10	Tubo di raccordo / Link pipe	9773KT025S2P	1
11	Guarnizione in grafite / Graphite bush	50.72.45.50.30	1
12	Fascetta Ø 52/55 mm / Pipe clamp Ø 52/55 mm	50.FA.008.1	1
-	DB killer	50.DK.159.0	1

APPLICAZIONI / APPLICATIONS		
CODICE / CODE	SILENZIATORE / MUFFLER	TUBO / PIPE
KT.025.LC4B	STEEL BLACK	INOX / ST. STEEL

